



AMI GROUP[®]
we shape your dreams...

AN ISO 9001 : 2008 CERTIFIED COMPANY

AMI & MONIKA DEVELOPERS

102, Manratna Business Park, Tilak Road,
Ghatkopar - East, Mumbai - 400 077. India.

T : +91-22-420 55555 • F : +91-22-420 55566
E : info@amihousing.com • W : www.amihousing.com

Site : Suvidha, Plot No : 48 & 49,
New Maneklal Estate, Near Arya Samaj Hall,
Ghatkopar (w) , Mumbai - 400 086.

Booking Contact : +91-22-420 55555 • 96 64 43 35 34

Architect : **Karani & Sanghoi Designer**

Designer Architect : **Snehal Parekh & Associates**

RCC Consultant : **Shanti Consultant**

Legal Advisor : **Adv Manoj Bhatt**

The information contained in this leaflet is indicative of the kind of development that is proposed at present. It is prepared and issued in good faith and is for guidance only. It does not constitute part of an offer or contract. Subject to the approval of the authorities or in the interest of the continuing improvement, the promoters/developers reserve the right to change plans, alter the layout, specifications or features without any prior notice or obligation. Guidelines are enforced for not allowing grills, flower pots etc. to be fixed outside windows or any changes to be made in external elevations.

Designed by : Bhavesh - 98201 87071



SWEET CHARM...
in form of this charming venture



Life is a challenge, meet it! Life is a dream, realize it! Life is a game, play it!

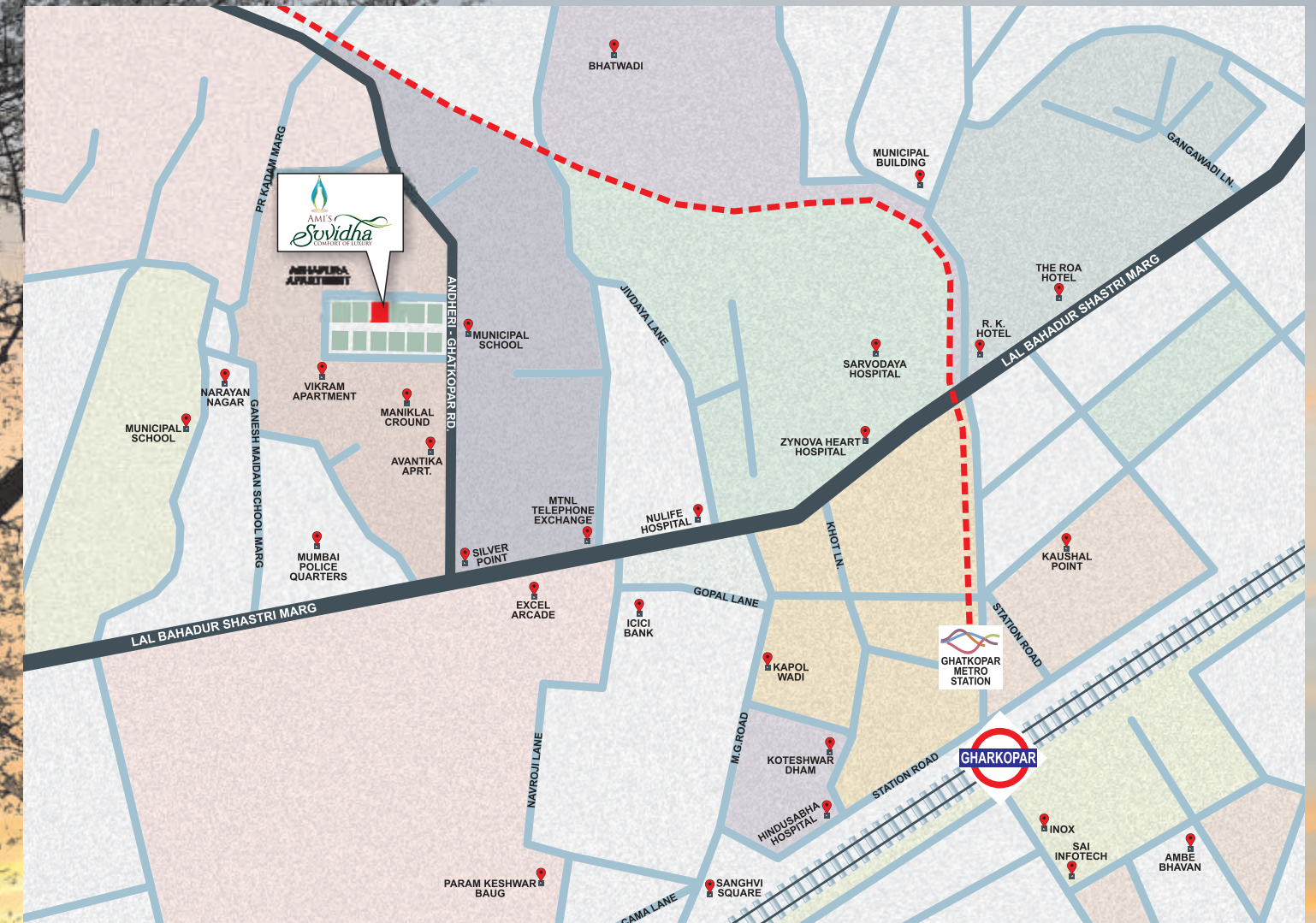
Life is all about “Ami's Suvidha”, enjoy it!

It's a remarkable project by the group offer the exact environment to grow and bring the most precious thing on Earth- A Smile. Living here is totally a charming experience with all the world-class amenities and facilities under your hands reach. It evokes the feeling of lavish lifestyle with lush green gardens, aroma of nature and offers a quality life.

The project encapsulates with 9 storeyed 2 Wings, offers the sheer luxury of 1RK, 1BHK, 2BHK & 3 BHK flats stands for its class and comfort. Even the project is located in one of the well-developed zone of Ghatkopar-West.

So be a part of this “Splendid Venture” where you will experience the real spirit of living for lifetime.

SWEET ENVIRONS...
in form of a convenient location



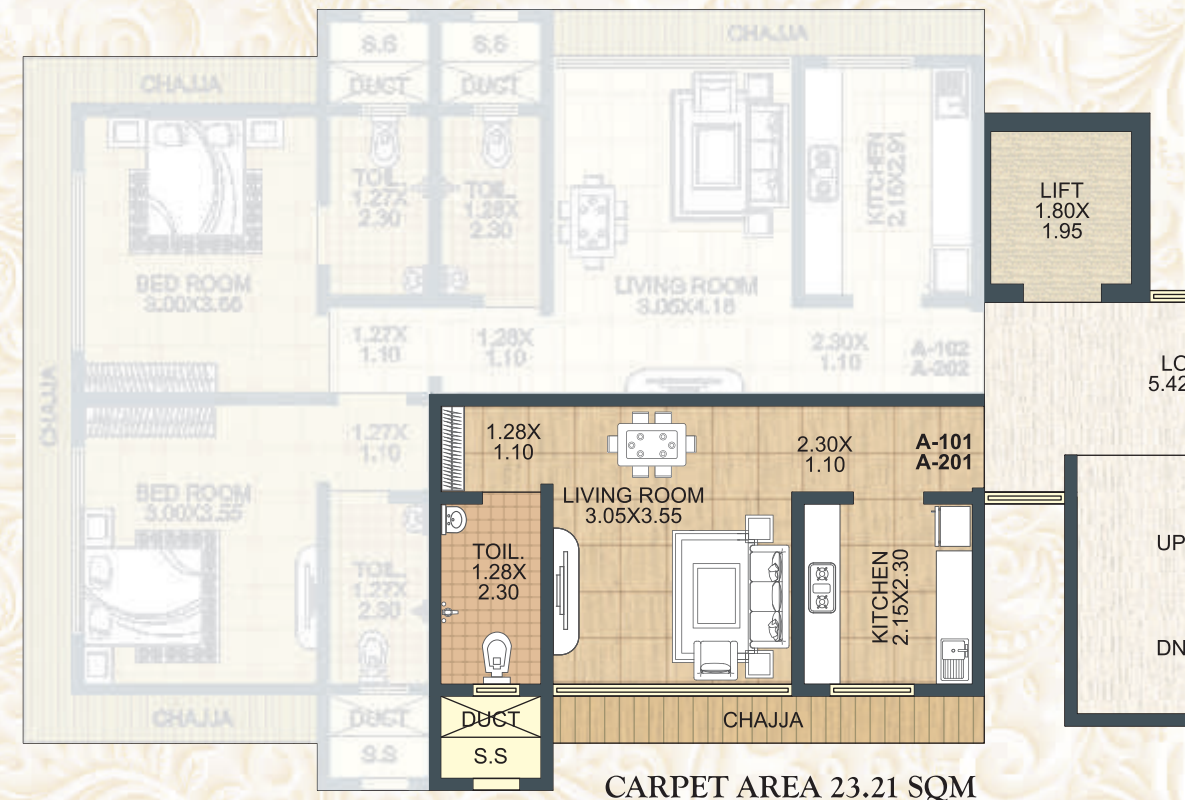
The location of the complex is rather unique and gives a unique living experience in blissful surroundings, where everything is conveniently connected.

When it comes to convenience schools, colleges, hospitals, malls, markets, restaurants all are within the easy access. And its just 2 Minutes walking distance from Jagruti Nagar Metro Station.

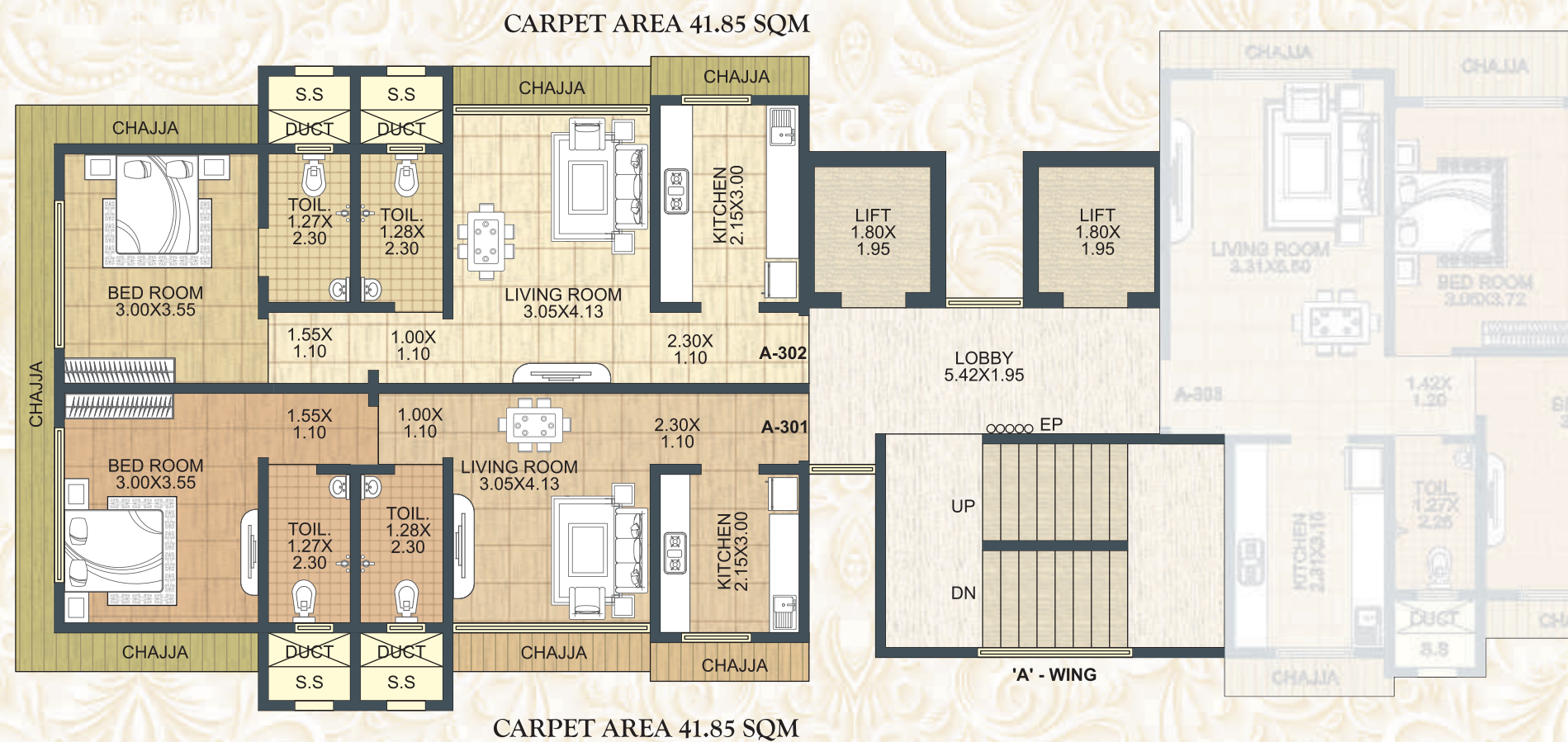
So get indulge in green environs of Ghatkopar, where you will find contentment, comfort and closeness.



FIRST TO SECOND
TYPICAL FLOOR PLAN



CARPET AREA 23.21 SQM



CARPET AREA 41.85 SQM

CARPET AREA 41.85 SQM

'A' - WING



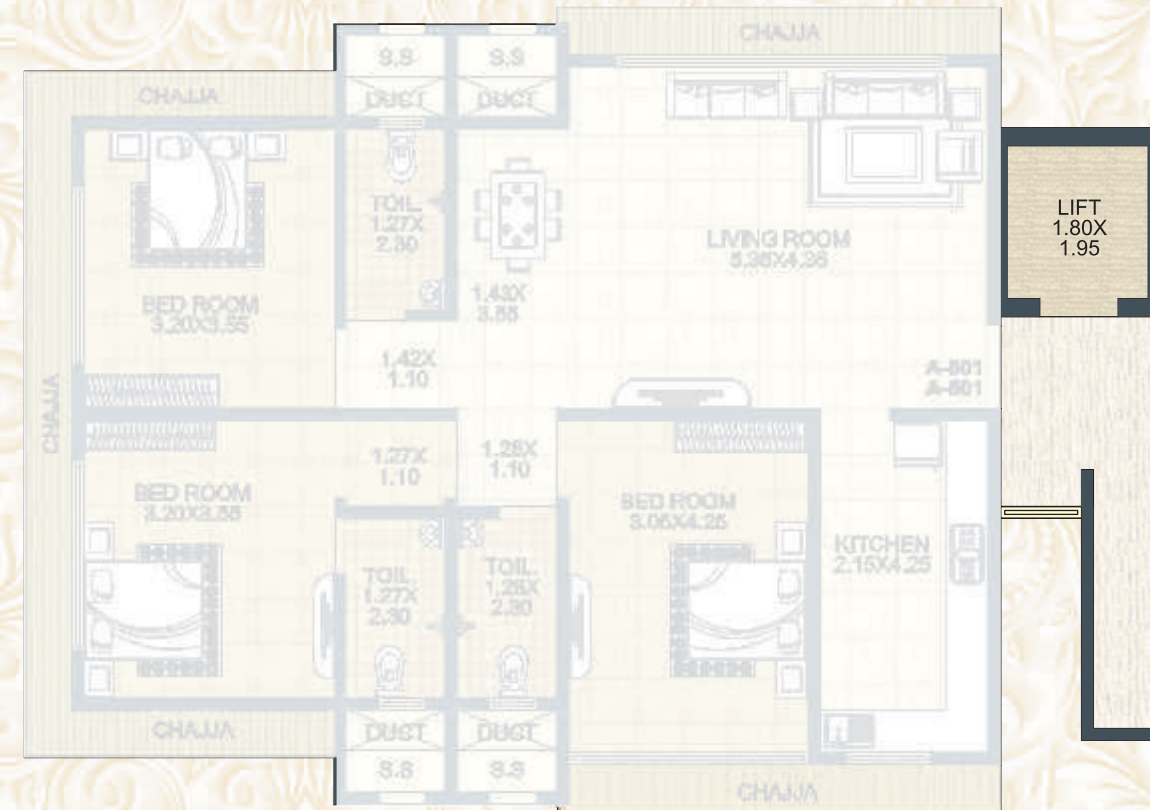
1 BHK
INTERIOR
LAYOUT



1 RK
INTERIOR
LAYOUT



FIFTH & SIXTH FLOOR PLAN



SWEET DESIRES...
in form of your desirable amenities & facilities



**3 BHK
INTERIOR
LAYOUT**



“**Ami's Suvidha**” presents you a unique combination of perfectness & space for your living. All flats are marvellously designed and surpass your needs and requirements.

EXTERNAL AMENITIES

- Staggeringly Well Designed Building With Commendable Elevation
- 1 RK, 1BHK, 2 BHK & 3BHK Spacious Luxurious Flats.
- Well Decorative Entrance Lobby With Canopy.
- Ample Car Parking
- Energy Efficient Lightings
- Ultra-modern Passengers Lifts
- 24*7 Cctv Security Systems.
- Borewell
- Rain Water Harvesting
- Intercom System
- One Flat On Each Floor (B Wing)
- Earthquake Resistant Seismic Structure
- 6” External And 4” Internal Wall
- Anti Termite Treatment
- All Services Designed By Renowned Consultants

DOOR:

- Elegant Laminated Main Door And Inner Doors
- Premium Quality Brass / Chromium Plated Fixtures And Fitting
- Granite / Marble Frames For Toilet

- WINDOWS:

- Powder Coated Aluminum Sliding Windows Of Branded Make In ¾ Tracks.
- Marble/granite Window Seal

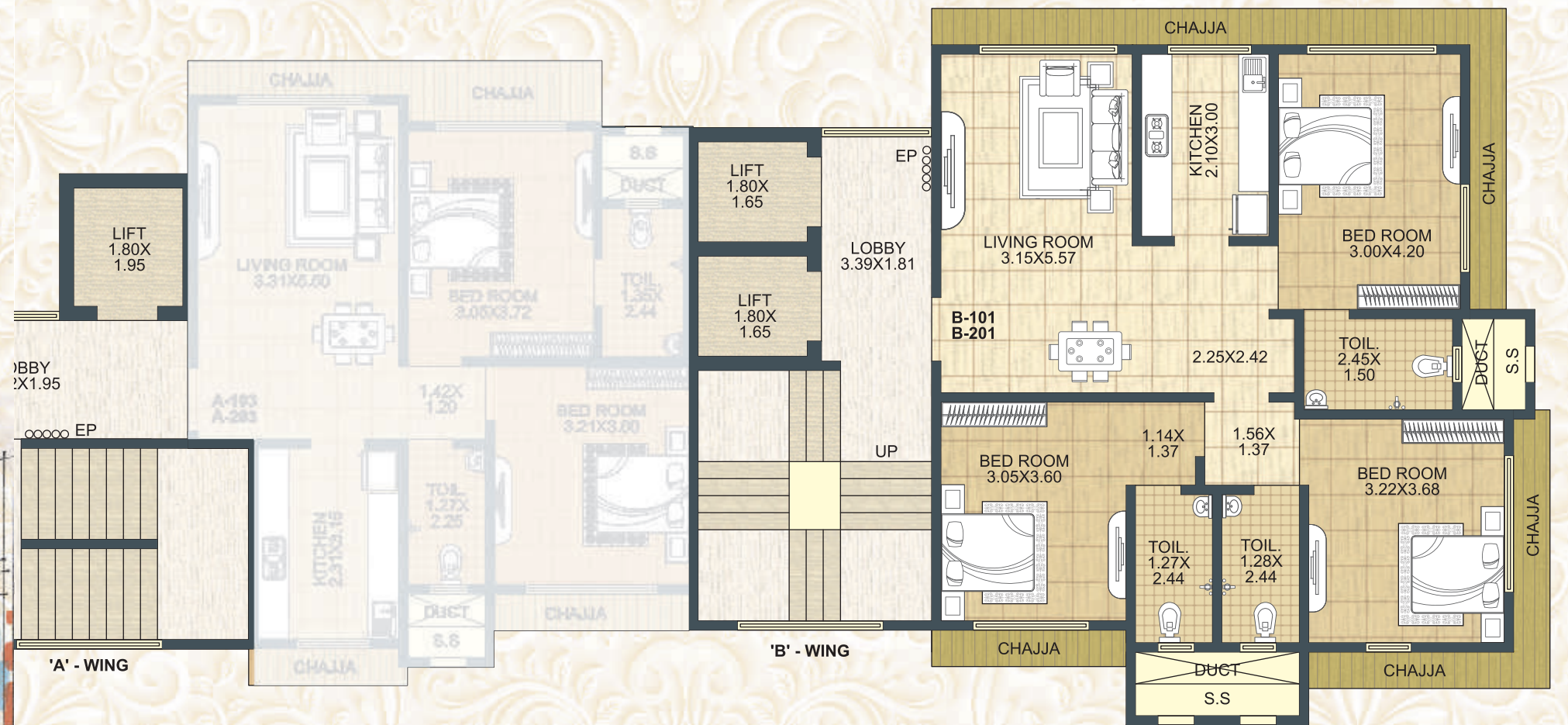
- FLOORING:**

- 800*800 Vitrified Tiles
- Master Bedroom With Vitrified Tiles .
- 1*1' Anti Skid Ceramic Tiles For Toilets , And Drying Area
- Concrete /paved Internal Pathways

- BATHROOM:**

- Marble/granite stone facia for door opening
- Dado tiles upto 7 ft. height
- Basin with granite counter for master bedroom
- Jaguar or similar make C.P. fittings with hot and cold mixers
- Sanitary fitting of Cera or equivalent make with health fasset

-
- The floor plan is divided into three main wings: 'A' - WING, 'B' - WING, and 'C' - WING. Each wing contains various rooms with their dimensions and specific features.
- 'A' - WING:**
- LOBBY: 5.42X1.95
 - LIFT: 1.80X1.95
 - LIVING ROOM: 8.31X6.50
 - BED ROOM: 3.00X3.72
 - KITCHEN: 2.31X3.15
 - TOIL: 1.27X2.35
 - DUCT: S.S.
 - CHAJJA
- 'B' - WING:**
- LIFT: 1.80X1.65
 - LIFT: 1.80X1.65
 - LOBBY: 3.39X1.81
 - BED ROOM: 3.21X3.60
 - TOIL: 1.35X2.44
 - DUCT: S.S.
 - CHAJJA
- 'C' - WING:**
- CHAJJA
 - LIVING ROOM: 3.15X5.57
 - KITCHEN: 2.10X3.23
 - BED ROOM: 3.00X4.43
 - TOIL: 2.45X1.50
 - DUCT: S.S.
 - CHAJJA
 - B-501
 - B-601
 - 2.25X2.42
 - 1.14X1.37
 - 1.56X1.37
 - BED ROOM: 3.05X3.96
 - TOIL: 1.27X2.44
 - TOIL: 1.28X2.44
 - BED ROOM: 3.22X3.68
 - DUCT: S.S.
 - CHAJJA
- Other Wing (Bottom):**
- CHAJJA
 - TOIL: 1.35X2.44
 - LIFT: 1.80X1.65
 - LIFT: 1.80X1.65
 - LOBBY: 3.39X1.81
 - BED ROOM: 3.21X3.60
 - UP
 - CHAJJA
 - B-701
 - B-702
 - UP
 - CHAJJA
 - TOIL: 2.10X1.92
 - BED ROOM: 3.16X3.75
 - 2.10X2.25
 - BED ROOM: 3.00X4.43
 - TOIL: 2.45X1.60
 - DUCT: S.S.
 - CHAJJA
 - LIVING ROOM: 3.15X3.15
 - 3.05X2.59
 - 1.56X1.09
 - BED ROOM: 3.22X3.68
 - TOIL: 1.27X2.44
 - TOIL: 1.28X2.44
 - DUCT: S.S.
 - CHAJJA
- A compass rose is located in the bottom right corner, indicating North (N), South (S), East (E), and West (W). The text "SEVENTH FLOOR PLAN" is written in a large, bold, serif font at the bottom center.



CARPET AREA 80.03 SQM



CARPET AREA 80.03 SQM



THIRD FLOOR PLAN

